

SUBJECT	DS2200 Firmware Update Installation Instruction for xD cards Type M (256MB/512MB/1GB)	09.28.2005
OLD DS2200 V1.02, V1.03, V1.04		NEW DS2200 V1.05
<p><u>Purpose:</u> This firmware update will enable the DS-2200 to support the use of xD picture card Type M (256MB/512MB/1GB). Before installing this firmware update on a DS-2200, please read the Installation Instruction in this document carefully.</p> <p>Who should use this firmware update? If your DS-2200 had firmware version 1.02, 1.03, and 1.04. If your DS-2200 serial number is less than <u>306151</u>.</p> <p>How can I check my DS-2200 recorder firmware version? To check the firmware version on your recorder, follow the steps below: 1. Turn OFF the recorder and remove the xD card. 2. Turn ON the recorder 3. Press and hold the STOP and MENU buttons simultaneously for few seconds until the recorder flashes the firmware version on the LCD.</p> <p>If the firmware version of your recorder is 1.02, 1.03, or 1.04, you need to follow the procedure below to install firmware version 1.05 on your DS-2200 recorder.</p> <p>General Precautions: Read the following precautions before starting to update firmware. *This program is only for use with the DS-2200. *This program runs on Windows 2000 or Windows XP *Never turn off power to the computer while the firmware update program is running, or a malfunction may ensue. *We recommend using an AC power adapter when conducting the update on a notebook computer. *Never turn off power on the DS-2200 or remove from the USB cable during the firmware update.</p>		

Firmware Update Installation Instruction:

System Requirements:

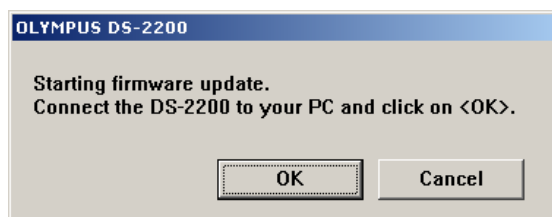
1. Your PC must be running Windows 2000 or Windows XP.
2. Your PC must meet the minimum requirement as indicated in the DSS Player Pro manual.
Check the manual for details.
3. The DSS Player Pro R3 or R4 must be installed on the PC.

Before you start:

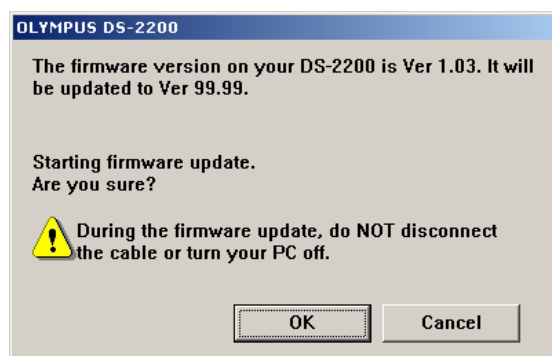
1. Close all running applications on your PC including any Olympus DSS Player program.
2. Shutdown the Olympus Device Detector program running in the system tray.

Starting Firmware Update:

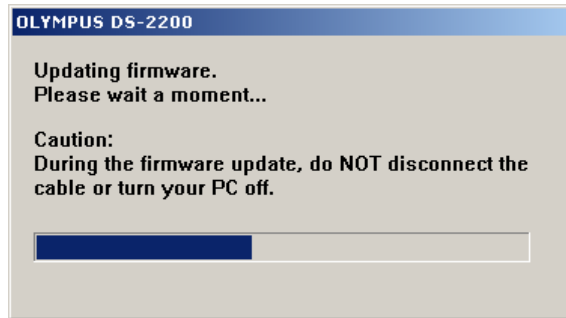
1. Connect the DS-2200 to the PC via the USB cable, before you switch the recorder ON.
The DS-2200 LCD will display the message "Remote".
2. Unzip the zipped file **DS2200_FWUpdate_V105.zip** into a temporary folder on your PC.
3. Double-click the **DS2200_FWUpdate_V105.exe**. The dialog box below will pop up, click K.O



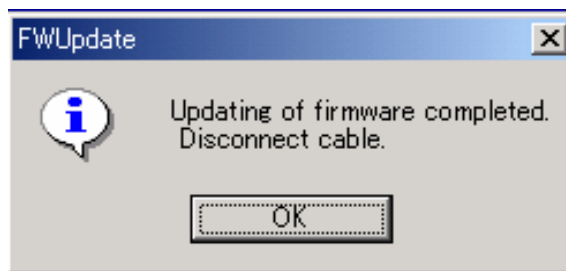
3. The confirmation dialog box shown below will confirm the current firmware version on your recorder. The current DS-2200 firmware version indicated should be 1.02, 1.03, or 1.04. The new firmware version number indicated in this box, 99.99 should be ignored.
4. Click OK to start the firmware up date.



4. While the process of updating the firmware is taking place, do not interrupt the process.



5. When the following dialog box is displayed, the process is complete. Click OK, then disconnect the DS-2200 from the USB cable.



6. Verify that the DS-2200 firmware has been updated by checking the firmware version as described above. It is also suggested you use a xD picture card of Type M in the DS-2200 to make sure it is recognized and usable for recording.